

N: 14891261.00  
E: 2312184.69  
(GROUND COORDINATE)

WASHOE COUNTY  
CONTROL POINT  
"S52SM01237"  
N: 14888367.44  
E: 2308754.56

RED HAWK LAND COMPANY  
PARCEL 7  
PM 4264

N: 14891240.02  
E: 2314135.72  
(GROUND COORDINATE)

WASHOE COUNTY  
CONTROL POINT  
"S52SM01222"  
N: 14894190.14  
E: 2314865.46  
(GROUND COORDINATE)

JAMES & DOROTHY LYON  
FAMILY TRUST ET AL  
PARCEL A  
PM 4608

COMMON AREA A  
6.24 ± ACRES

COMMON AREA B  
10.07 ± ACRES

COMMON AREA C  
16.61 ± ACRES

**REFERENCES**

1. RECORD OF SURVEY 1312, RECORDED FILE NO. 615357, JULY 3, 1979
2. TRACT MAP 4522, RECORDED FILE NO. 3250305, JULY 25, 2005
3. RECORD OF SURVEY 4618, RECORDED FILE NO. 3262889, AUGUST 17, 2005
4. TRACT MAP 4770, RECORDED FILE NO. 3521804, APRIL 17, 2007
5. RECORD OF SURVEY 6044, RECORDED FILE NO. 4915646, MAY 30, 2019
6. TRACT MAP 5336, RECORDED FILE NO. 4938373, AUGUST 9, 2019

**BASIS OF BEARINGS**

THE BASIS OF BEARINGS FOR THIS SURVEY IS NAD 83/94, NEVADA WEST ZONE, PER TIES TO WASHOE COUNTY CONTROL POINTS AS SHOWN HEREON. A COMBINED GRID TO GROUND FACTOR OF 1.000197939 WAS USED TO CONVERT PUBLISHED GRID COORDINATES TO GROUND. ALL DISTANCES SHOWN ON THIS MAP ARE GROUND DISTANCES.

**NOTE**  
SEE SHEET 3 FOR LINE AND CURVE TABLES

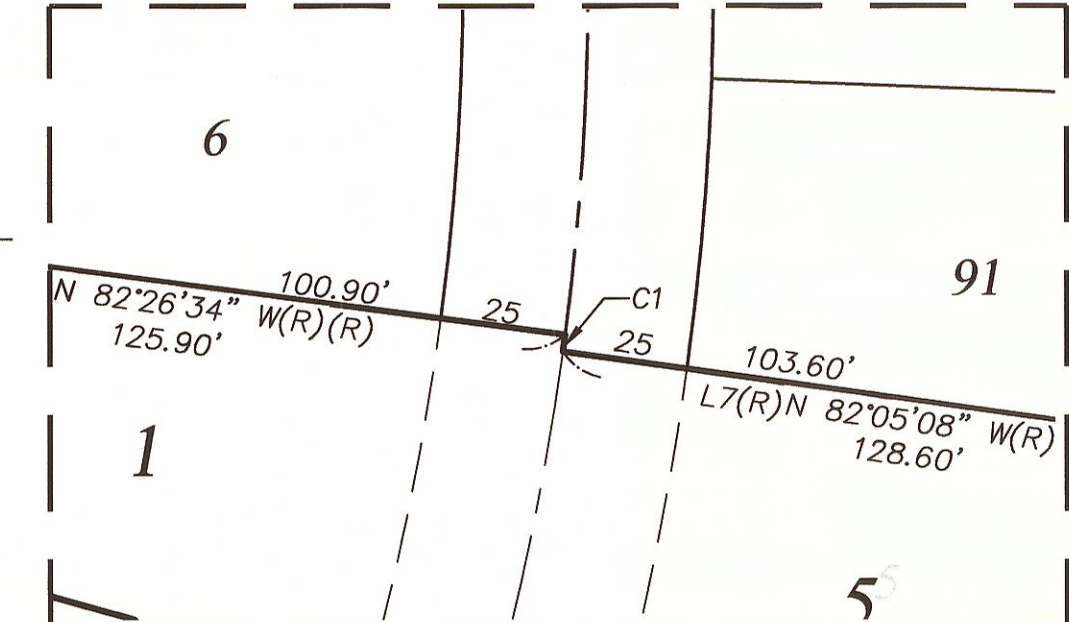
**AREA TABULATIONS**

|               |                 |
|---------------|-----------------|
| BOUNDARY AREA | = ± 53.72 ACRES |
| LOT AREA (86) | = ± 16.36 ACRES |
| DEDICATED ROW | = ± 4.44 ACRES  |
| COMMON AREA A | = ± 6.24 ACRES  |
| COMMON AREA B | = ± 10.07 ACRES |
| COMMON AREA C | = ± 16.61 ACRES |

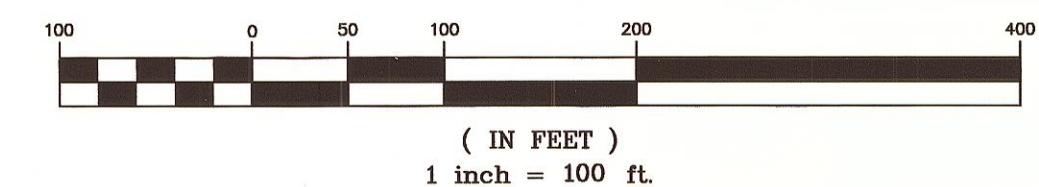
**LEGEND**

- ⊙ SET TYPICAL STREET CENTERLINE MONUMENT STAMPED "PLS 16444"
- ▲ FND 5/8" REBAR WITH CAP "RLS 1797"
- ▲ FND 5/8" REBAR WITH CAP "PLS 12140"
- FOUND 1/4 CORNER AS NOTED
- FOUND 5/8" REBAR WITH CAP / PLS 16444
- TYPICAL LOT CORNER - SET 5/8" REBAR WITH CAP STAMPED P.L.S. 16444 OR SCRIBE ON CURB ON THE PROJECTION OF THE LOT LINE TO BE SET
- △ FOUND WASHOE COUNTY GPS CONTROL MONUMENT
- CA COMMON AREA
- (R) RADIAL BEARING
- P.U.E. PUBLIC UTILITY EASEMENT
- PM PARCEL MAP
- TM TRACT MAP
- RS RECORD OF SURVEY
- ROW RIGHT-OF-WAY
- DE DRAINAGE EASEMENT
- CATV CABLE TELEVISION
- STREET NAME CHANGE
- PROPERTY LINE
- ADJACENT PROPERTY LINE
- EASEMENT LINE
- CENTERLINE
- SURVEY TIE
- GRAPHIC BORDER

**DETAIL A**

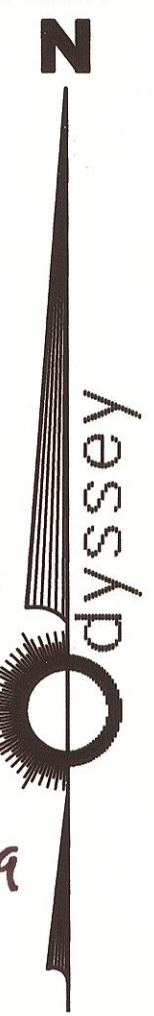


**GRAPHIC SCALE**



**OFFICIAL PLAT OF**  
**MIRAMONTE PHASE 5-B**  
BEING A SUBDIVISION OF PARCEL 1-A OF TM 5336  
LOCATED IN THE NW 1/4 OF SECTION 24, T.20N., R.20E., M.D.M.

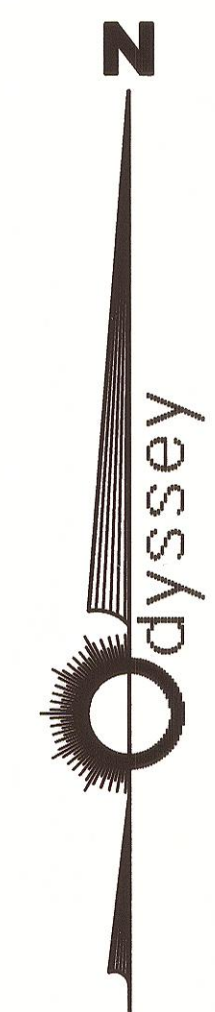
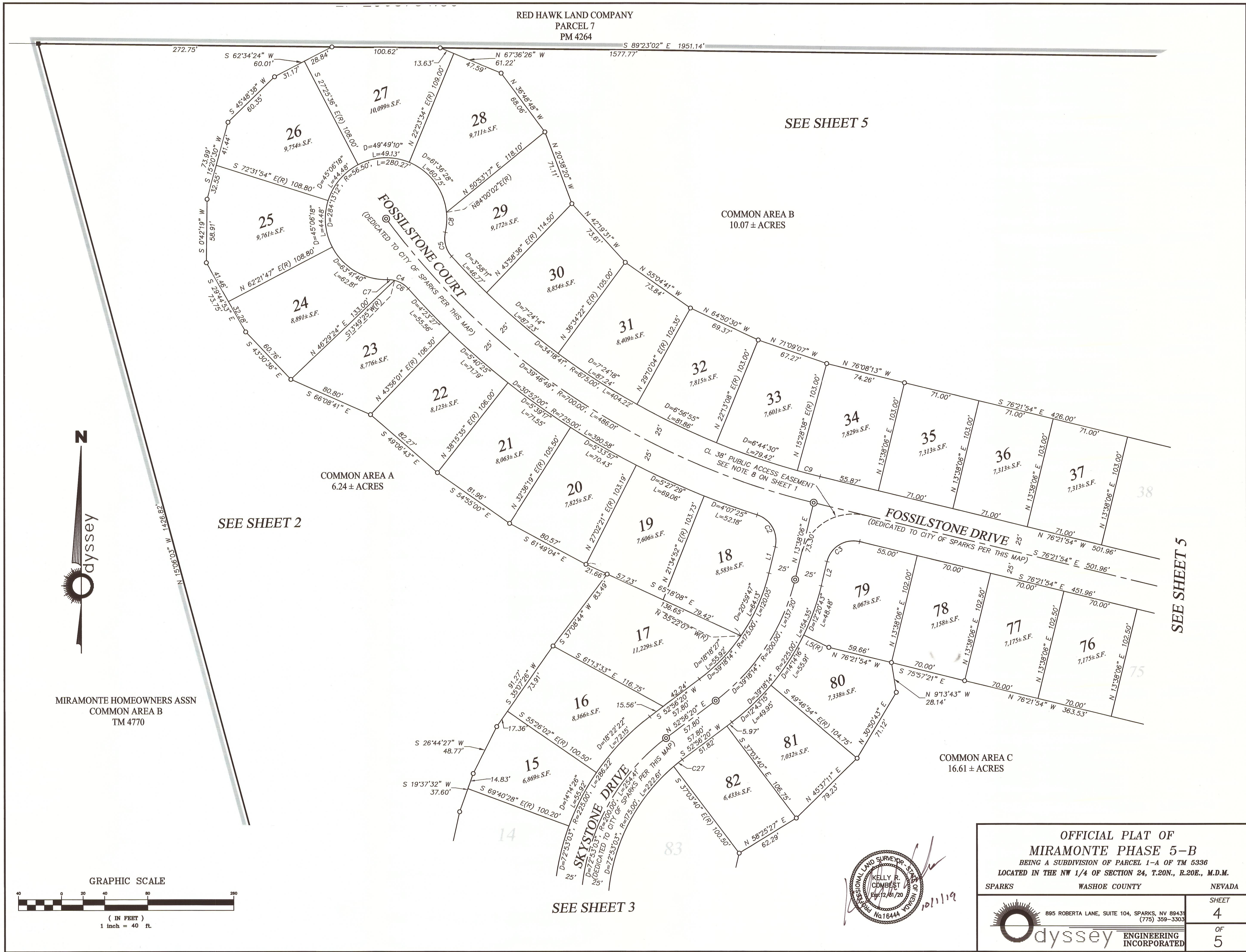
|   |               |                                     |
|---|---------------|-------------------------------------|
| SPARKS  | WASHOE COUNTY | NEVADA                              |
|   |               |                                     |
| 895 ROBERTA LANE, SUITE 104, SPARKS, NV 89431<br>(775) 359-3303 |               | SHEET<br><b>2</b><br>OF<br><b>5</b> |



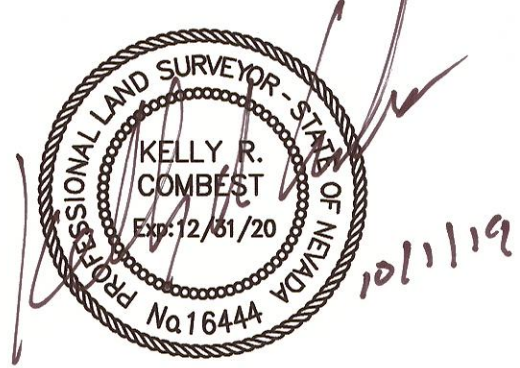
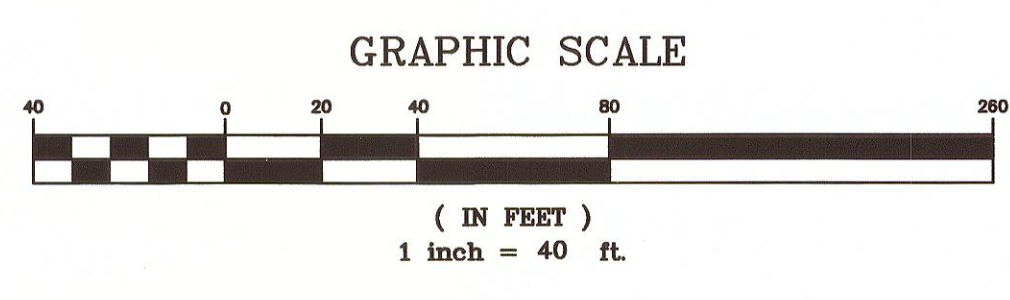








MIRAMONTE HOMEOWNERS ASSN  
 COMMON AREA B  
 TM 4770



**OFFICIAL PLAT OF**  
**MIRAMONTE PHASE 5-B**  
 BEING A SUBDIVISION OF PARCEL 1-A OF TM 5336  
 LOCATED IN THE NW 1/4 OF SECTION 24, T.20N., R.20E., M.D.M.

|   |               |                                     |
|---|---------------|-------------------------------------|
| SPARKS                                  | WASHOE COUNTY | NEVADA                              |
| <b>odyssey ENGINEERING INCORPORATED</b> |               | SHEET<br><b>4</b><br>OF<br><b>5</b> |

895 ROBERTA LANE, SUITE 104, SPARKS, NV 89431  
 (775) 359-3303



